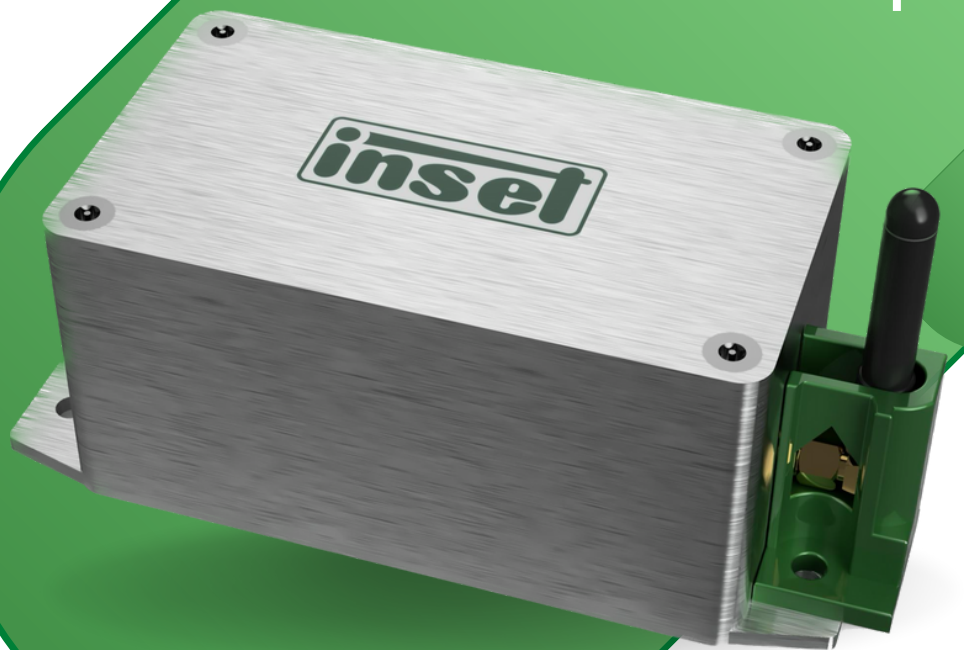


DATA SHEET

IOTIN |

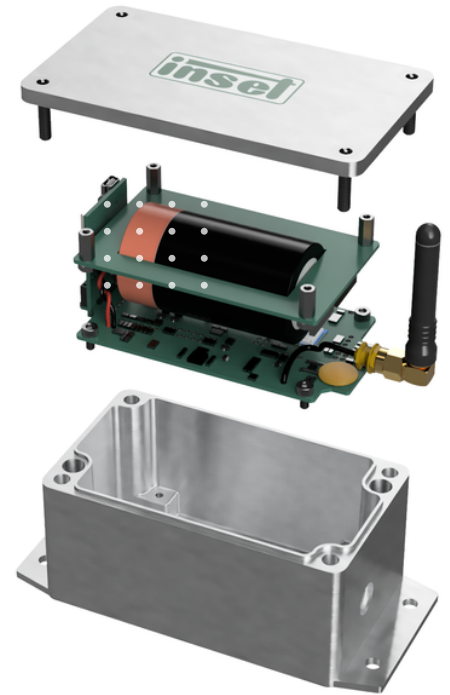


inset

INCLINOMETER

IOTIN

- Ultra-precise two-axis tilt measurement sensor
- Built-in thermometer
- Range + - 30°
- Wireless communication using LoRa protocol
- Battery with lifetime > 15 years
- Extremely high accuracy, sensitivity and repeatability
- Built-in accelerometer for vibration measurement, range 2g to 16g
- Accredited calibrated - metrological continuity with CZECH METROLOGY INSTITUTE



SPECIFICATIONS

INCLINOMETER

Range:	from -30° to 30°
Full possible sensor range:	360°
Repeatability:	0.001% of range
Resolution:	0.0001°
Temperature drift:	0.1% on full range
Maximum measurement frequency:	2x/1s
Number of axes:	2

ACCELEROMETER

Range:	depending on setting, +-2g, +-4g, +-8g, +-16g
Maximum measurement frequency:	1,6kHz
Resolution:	0,01% of range
Number of axes:	3

TOGETHER

Dimensions with antenna:	length 150 mm, width 66 mm, height 71 mm
Weight:	568g
Temperature range:	from -20 to +80 degrees
Battery life:	2 years, varies depending on to use, measurement frequency and external factors

